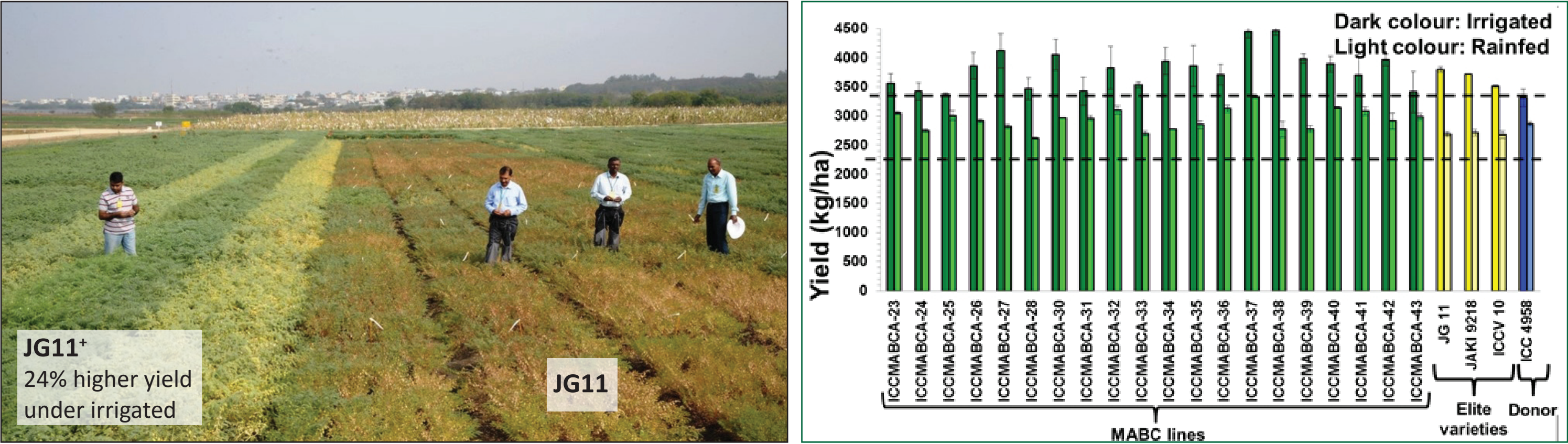
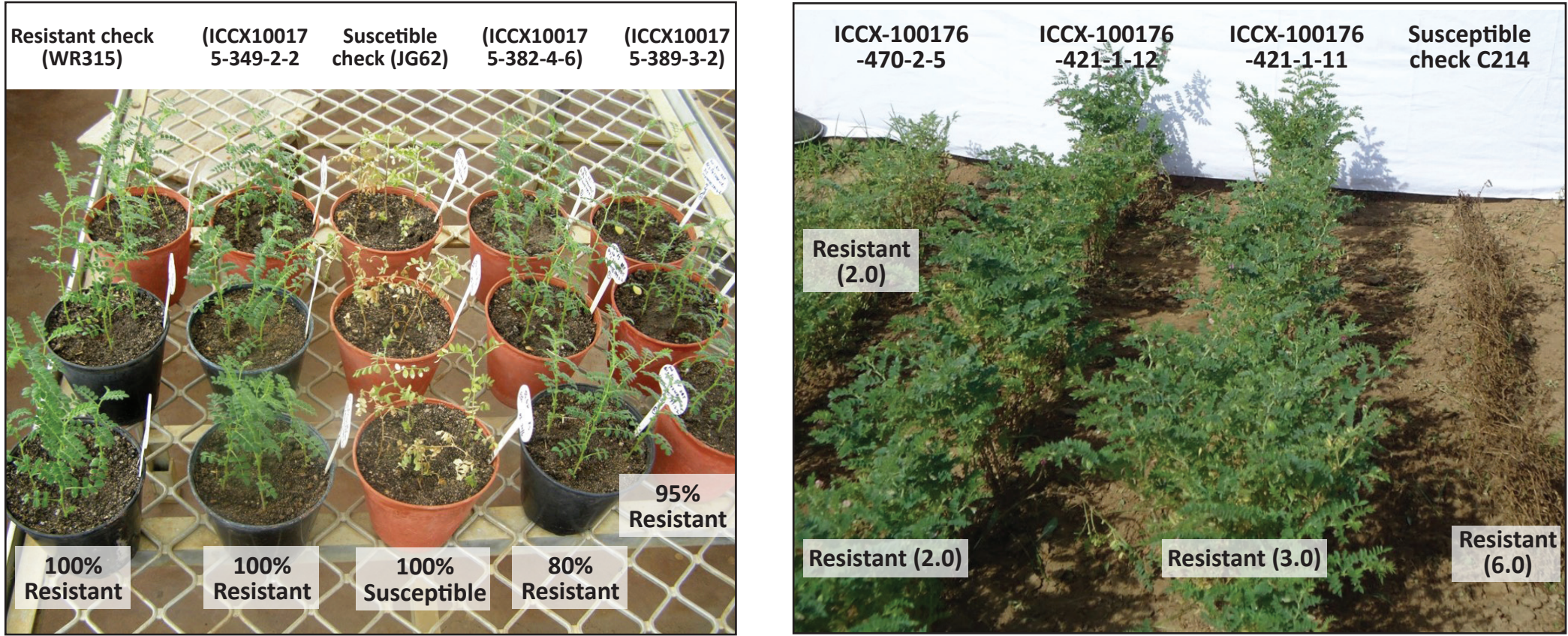




## 1. Improved lines with enhanced yield in chickpea

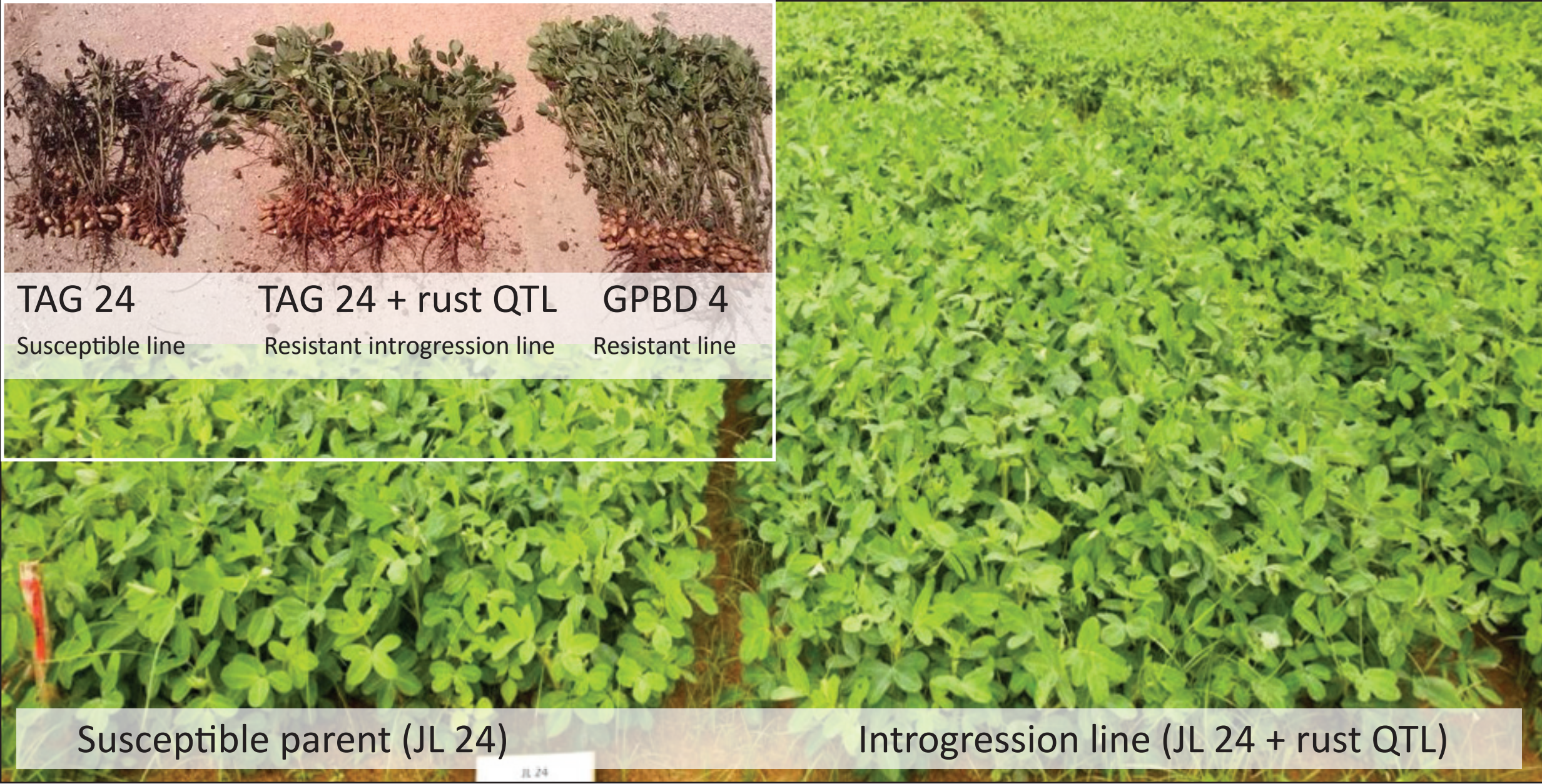


## 2. Improved lines with disease resistance in chickpea

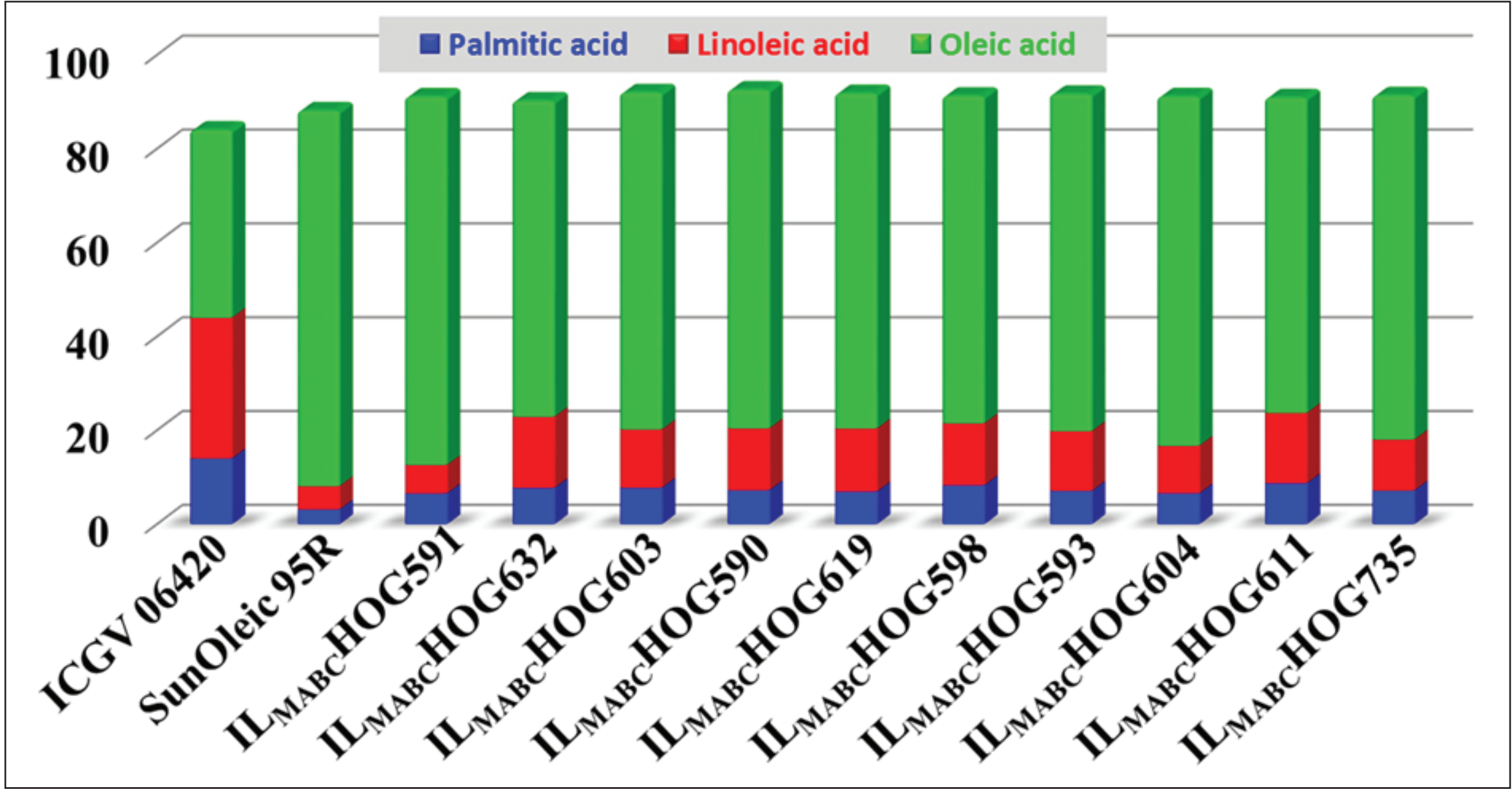


Fusarium wilt resistant line

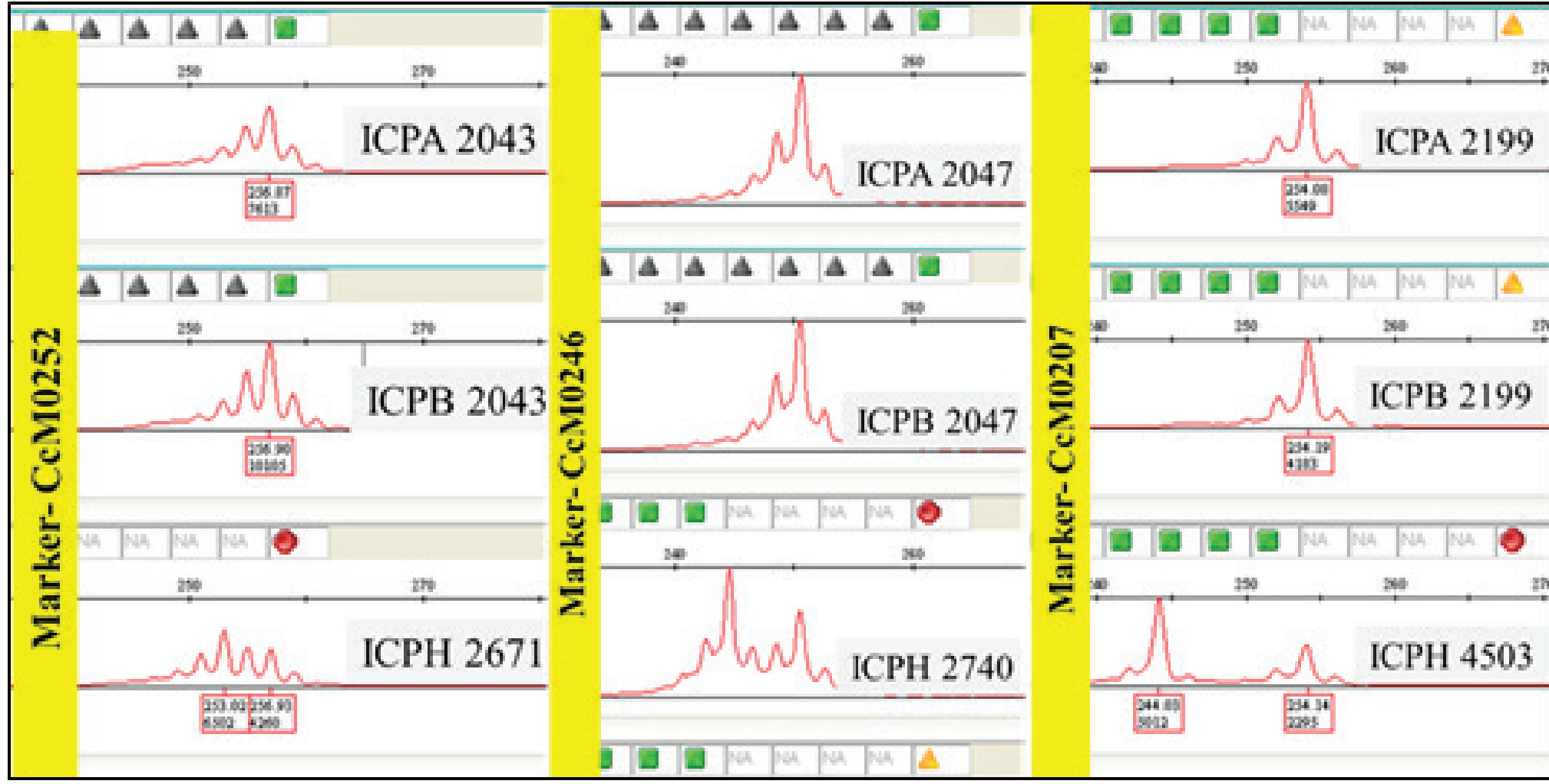
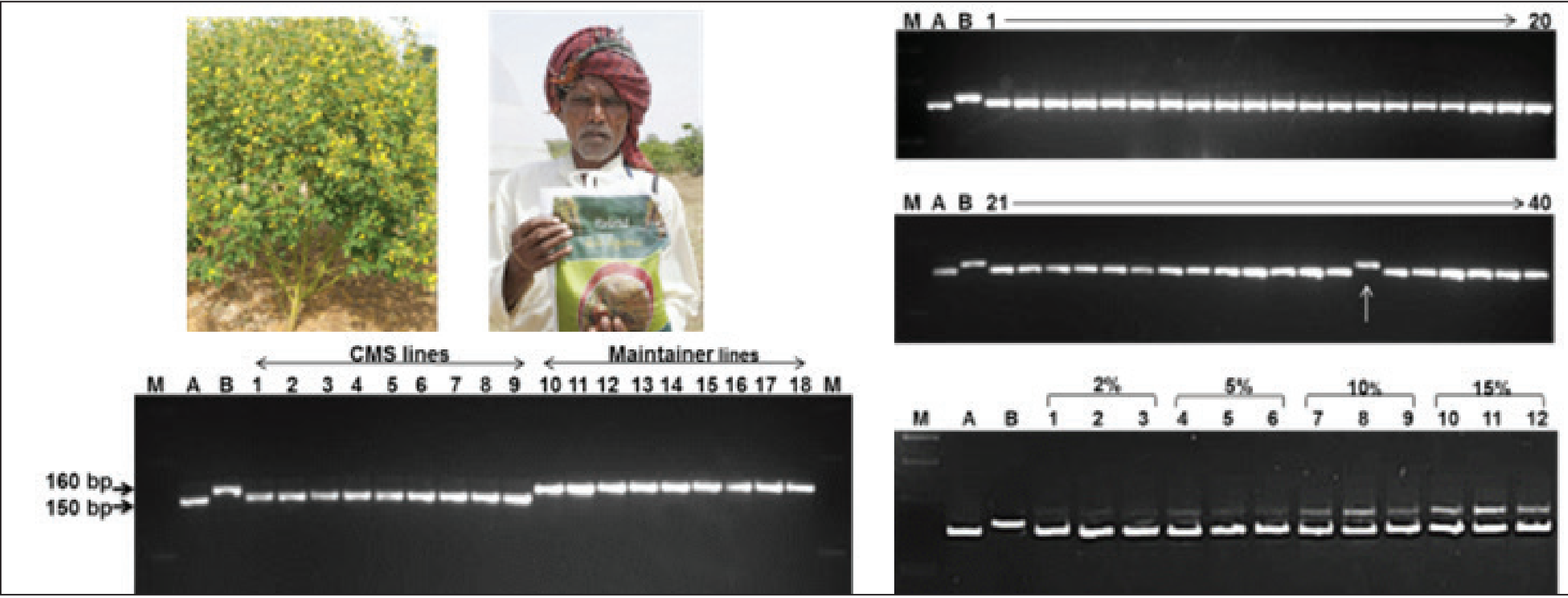
## 3. Improved lines for foliar disease (rust and late leaf spot) resistance in groundnut



## 4. Improved lines for high oleic acid in groundnut



## 5. Efficient hybrid breeding in pigeonpea



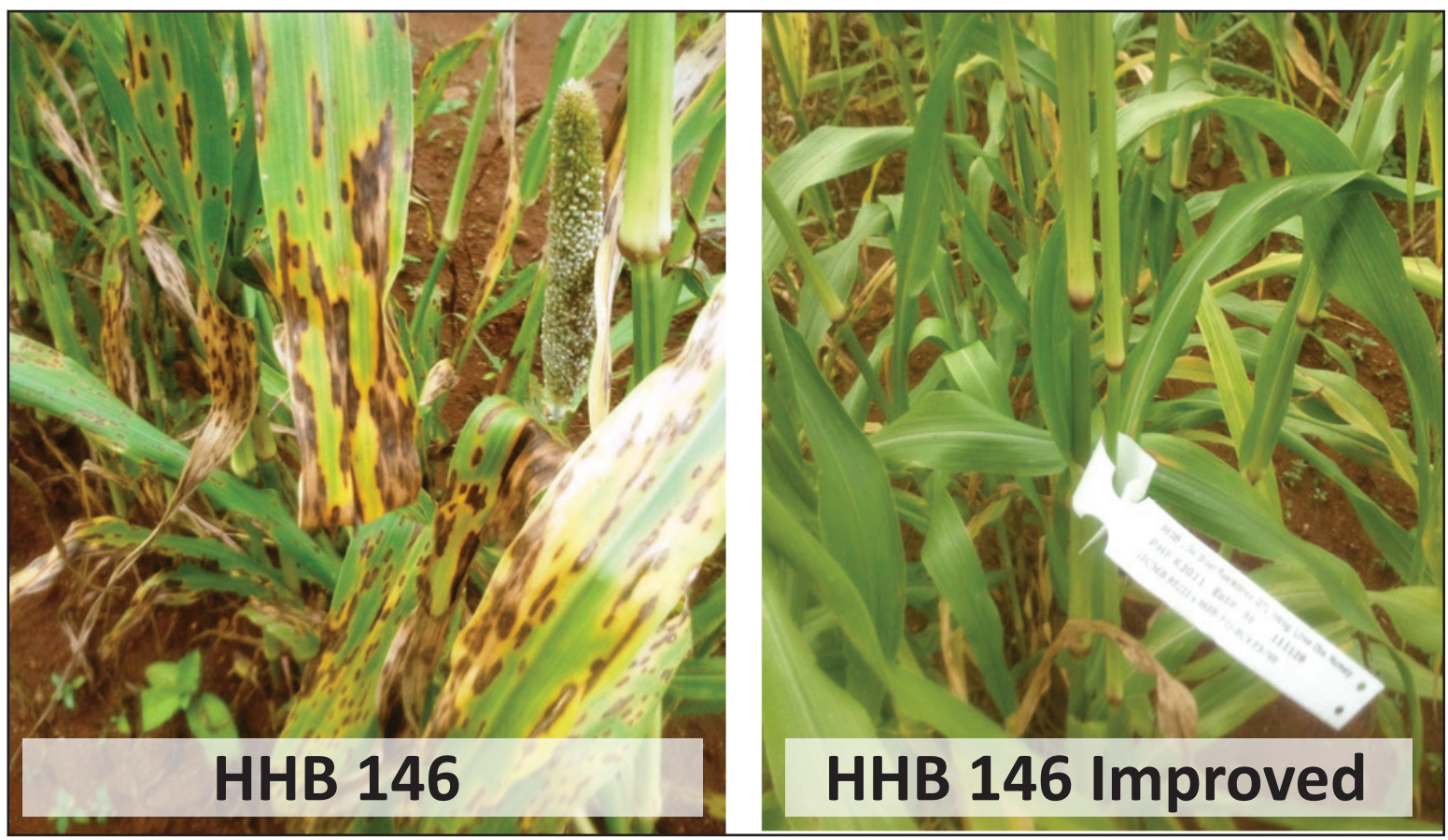
## 6. Improved lines for downy mildew resistance (DMR) in pearl millet



## 7. Improved lines for high grain Fe & Zn density and DMR in pearl millet



## 8. Improved lines for blast resistance in pearl millet



## 9. Improved lines for striga resistance in sorghum



## 10. Improved lines for drought tolerance in sorghum

